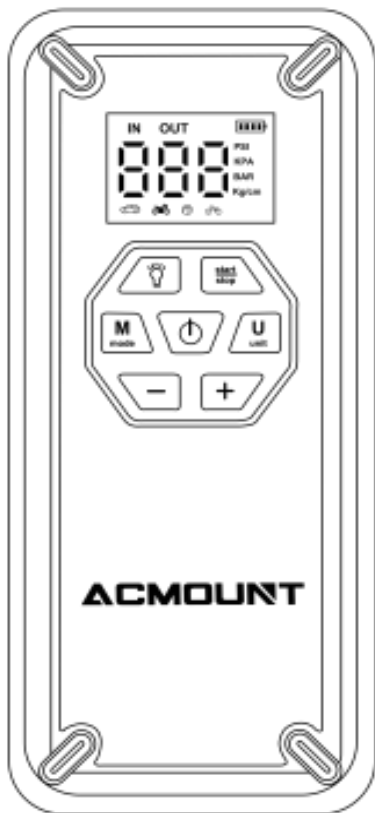


ACMOUNT

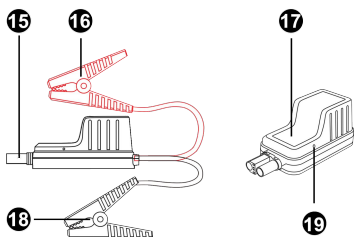
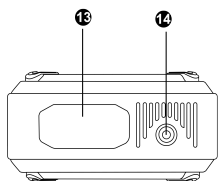
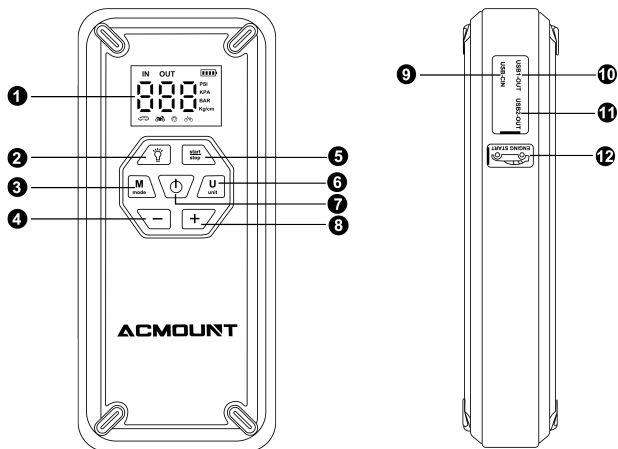
W160 Car Jump Starter



USER MANUAL

support@acmount.net

Know Your Product



- | | | |
|--------------------------|---------------------------|-------------------------------|
| 1 LED Screen | 7 Power Button | 14 Air Hose Interface |
| 2 Lighting Button | 8 "+" Button | 15 Smart Clamp Plug |
| 3 Mode Button | 9 USB-C Input | 16 Red Jump Cable(+) |
| 4 "-" Button | 10 USB1-OUT | 17 Indicator Light |
| 5 Inflate Button | 11 USB2-OUT | 18 Black Jump Cable(-) |
| 6 Unit Button | 12 Jump Start Port | 19 Force Start Button |
| | 13 LED Light | |

Charging Your Jump Starter

1. Please use the included USB-C charging cable and adapter (5V/2A and above) to charge the product. (adapter is not included)
2. It will take about 5 hours to fully charge the unit when using a 5V/2A adapter. In order to extend the battery life, please fully charge the unit every 3 months.
3. When using the product for the first time, please make sure the product is fully charged.

Powering Your Devices

This portable jump starter is equipped with dual USB outputs (Output1: 5V/2.4A Output2: 5V/2.4A, 9V/2A, 12V/1.5A) that can quickly charge your portable electronic devices such as phones, tablets, etc.

LED Light

Short press the power button to turn on the device, then press the lighting button more to turn on the light mode, then short press the lighting button to change the modes in lighting, SOS, Strobe, press once more to turn it off.

Air Compressor

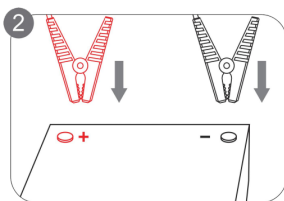
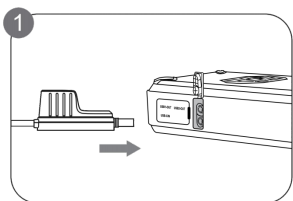
Built-in 150 PSI air pump, it supports 5 inflation modes: car inflation mode, motorcycle inflation mode, bicycle inflation mode, basketball inflation mode, custom inflation mode; 3 kinds of unit switching, BAR, KPA, PSI.

Inflation Modes	Pressure Range
Car Inflation Mode	26~51 PSI, 1.8~3.5 Bar, 180~350 Kpa
Motorcycle Inflation Mode	26~44 PSI, 1.8~3.0 Bar, 180~300 Kpa
Bicycle Inflation Mode	30~65 PSI, 2.0~4.5 Bar, 200~450 Kpa
Basketball Inflation Mode	4~16 PSI, 0.2~1.1 Bar, 20~110 Kpa
Custom Inflation Mode	3~150 PSI, 0.2~9.9 Bar, 20~990 Kpa

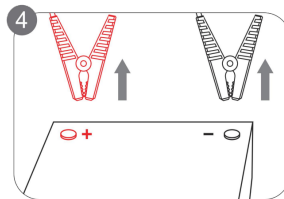
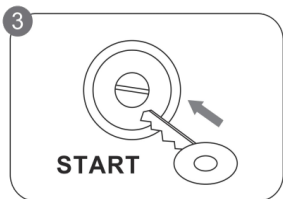
How to Inflate Car Tires

1. Take out the device and connect the air hose and tighten it, press the Power button to start the device, press the Mode button to enter the inflation mode
2. Press the Mode button to select the inflation mode, press the Unit button to switch 3 kinds of unit, press the "+" button / "-" button to adjust the airpressure value
3. Long press the Inflate button to start inflation
4. When the tire pressure reaches the preset value, it will automatically turn off.

Jump Start Your Car



1. Insert the plug of the smart clamp into the jump starter, the indicator light of the smart clamp will flash red and green alternately
2. Correctly clip the red and black clamps to the electrodes of the car battery (red to positive and black to negative), the indicator light of the smart clamp is always green.



3. Start the vehicle.
4. When the vehicle is started, remove the jumper cable from the car battery immediately.

Note:

1. If it does not start successfully, please wait for 60 seconds and then repeat the above steps.
2. When using this product, please do not connect two clips together. Otherwise, this product will be damaged.

Indicator Light Troubleshooting Guide

Phenomenon of Indicator Light	Method of Exclusion
The red light is always on, and the buzzer beeps shortly	Please check whether the clips are reversed red to positive and black to negative
The red light is always on and the buzzer is always beeping	Please check whether the clips are connected together or on the same metal conductor
The red light is always on, but the buzzer does not sound	Remove the clip from the car battery and reconnect it
The red light is always on, and the buzzer beeps quickly and briefly	Smart dip failure, please contact us to replace the smart dip

Error Message on Screen/ Cause/ Solution

“E1”- Low temperature charging protection: Stop charging, it will automatically release protection when the temperature rises above 2°C

“E2”- High temperature charging protection: Stop charging, it will automatically release protection when the temperature is lower than 45°C

“E3”- High temperature discharge protection: Stop charging, it will automatically release protection when the temperature is lower than 65°C

“E7”- Cylinder over temperature protection: Automatically release the protection when the temperature is lower than 70°C. After the protection is released, please wait for 10 minutes before continuing to operate.

Specifications

Mode	Amount W160 Car Jump Starter
USBOutput1	5V/2.4A
USBOutput2	5V/2.4A,9V/2A,12V/1.5A
USB-CInput	5V/2A,9V/2A
Size	220*97*47mm

Package Content

Acmount W160 Jump Starter with Air Compressor *1

Gas Nozzles *4

Air Pump Hose *1

Smart Jumper Clamps *1

USB-C Charging Cable *1

User Manual*1

Portable Storage Bag *1

Maintenance

1. Do not use the product to start an already expanded car battery.
2. Inflate continuously for more than 10 minutes. It is recommended to stop for 10 minutes and continue to use after the temperature of the machine drops!
3. When using this product, keep the surroundings well ventilated, do not block the cooling holes, and do not use it in the following environments:
 - Damp places and places easily splashed by water.
 - A place where it is easy to drop.
 - A place subject to vibration, corrosion, dust, and chemical gas hazards.
 - A place where flammable and explosive materials are stored, and near a high-temperature heat source.
4. Check the battery level at least once every 3 months and recharge it in time.
5. Keep away from children and pets.

Warranty

If there is any problem or failure during use, please send your question and order number to our email.

We will provide you with good after-sales service within 24 hours.

support@acmount.net